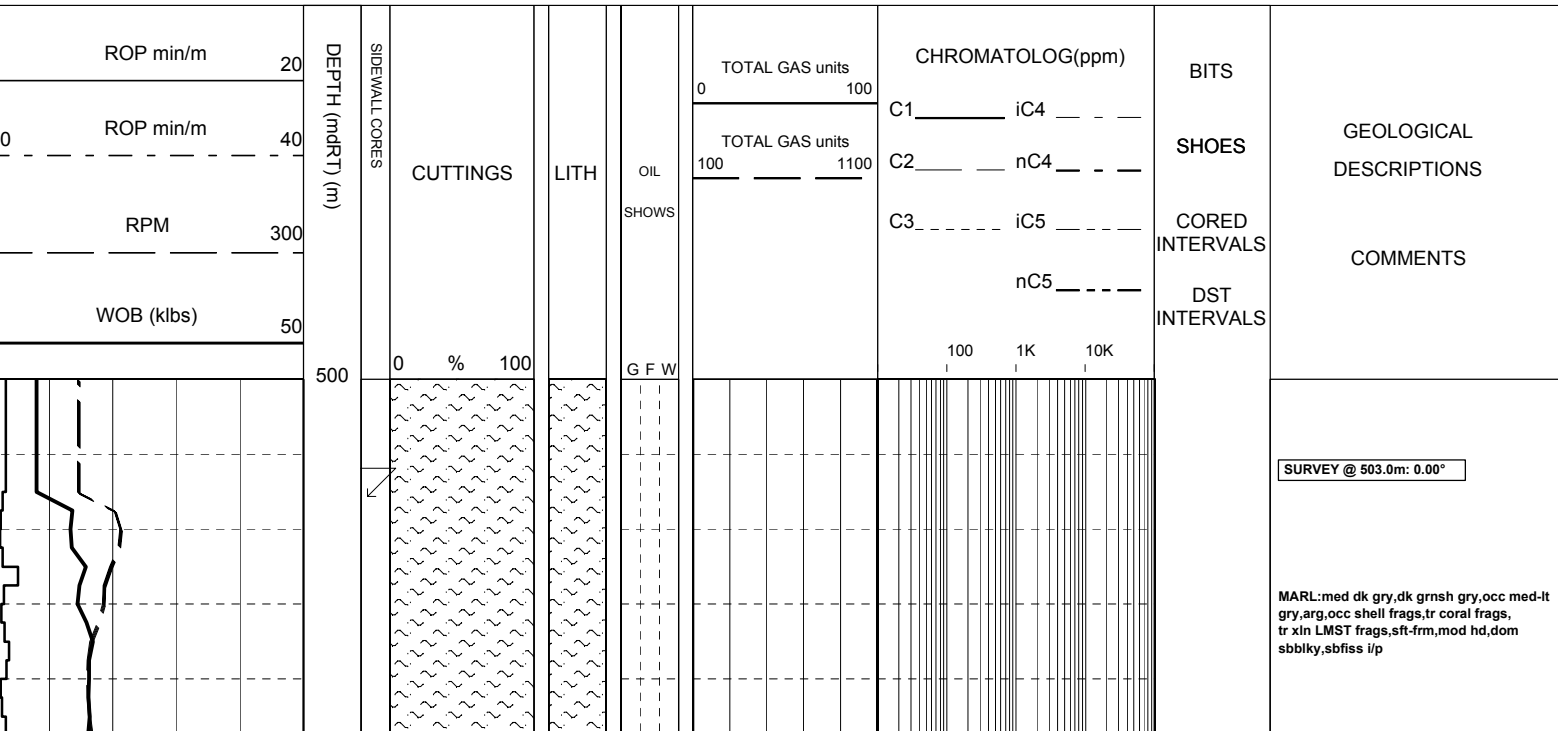


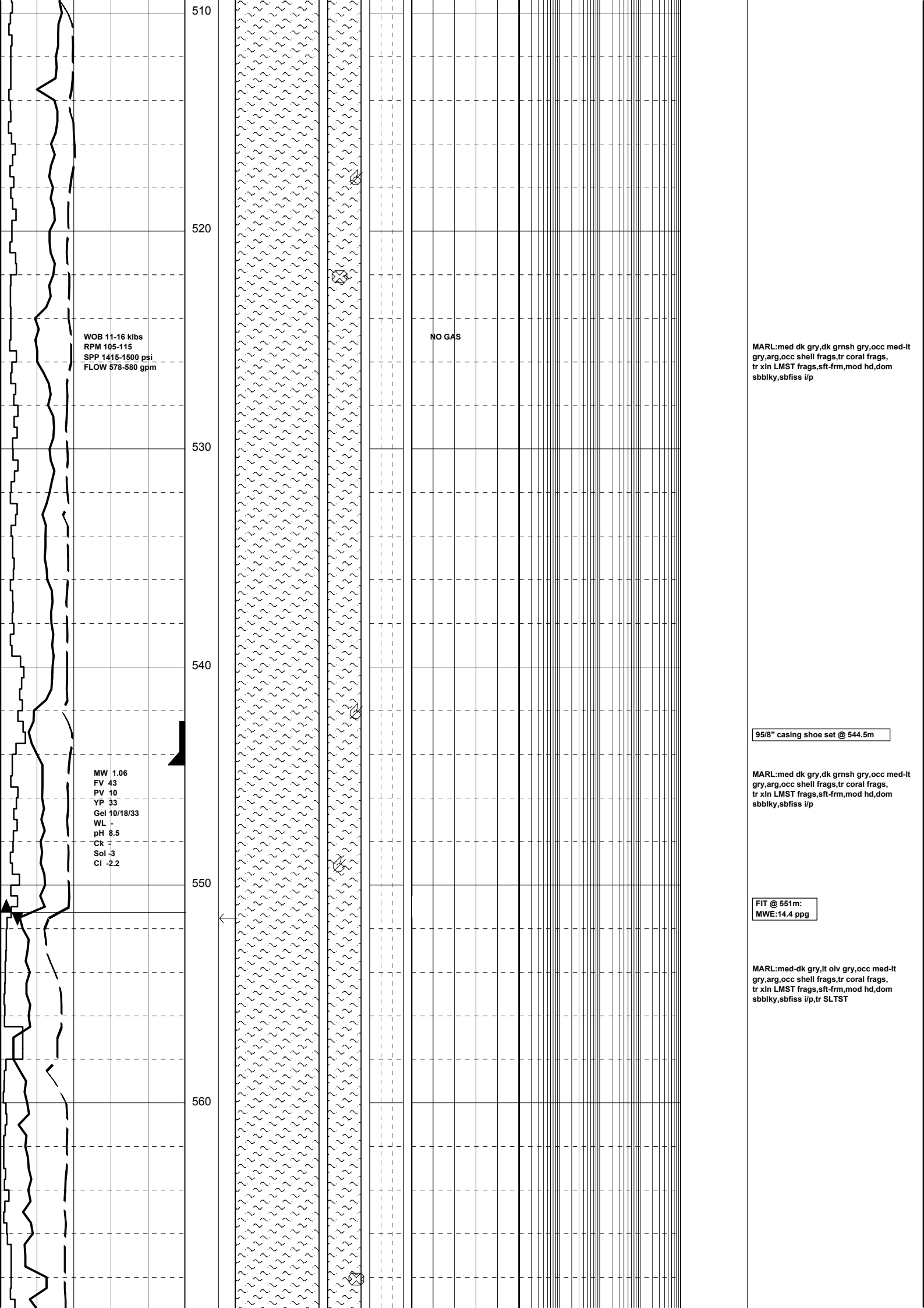
COMPANY	ORIGIN ENERGY ORIGIN ENERGY	SPUD DATE	19-09-2005
RIG	CENTURY 7	TD DATE	TD DATE
AREA	PEP 154	TD DRILLER	TD DRILLER
STATE/COUNTRY	VICTORIA, AUSTRALIA	TD WIRELINE	TD WIRELINE
LOCATION	38ø29'31.96"S 142ø44'46.66"E	LOGGED FROM	LOGGED FROM
GROUND LVL	46.17m	LOGGED TO	TD WIRELINE
RT HEIGHT	5.3m	FINAL STATUS	STATUS
DEPTH REF	ROTARY TABLE		

WELL CONFIGURATION				LOGGING ENGINEERS		SCALE 1/ 200
BIT SIZE	HOLE DEPTH (m)	CASING SIZE	CASING DEPTH (m)	Rory McLellan		
311mm	551m	245mm	544.5m	Aroop Dev		
216mm	OH TD			W.S.G. John Hobday		

SYMBOLS NEW BIT RUN NEW CORE BIT RUN CASING SHOE LINER HANGER MUD LOSS / MUD GAIN Recovered SIDEWALL CORES Not Recovered		ABBREVIATIONS NB NEW BIT NCB NEW CORE BIT RRB RE-RUN BIT CS CASING SHOE SWC SIDE WALL CORE EL ELECTRIC LOG WOB WEIGHT ON BIT RPM REVOLUTIONS/MINUTE SPP STAND PIPE PRESSURE SPM STROKES/MINUTE CR CIRCULATED RETURNS PR POOR RETURNS NR NO RETURNS TG TRIP GAS CG CONNECTION GAS WTG WIPER TRIP GAS SG SWAB GAS DS DIRECTIONAL SURVEY WT WIPER TRIP POOH PULL OUT OF HOLE RIH RUN IN HOLE AZI AZIMUTH INCL INCLINATION LCM LOST CIRCULATION MATERIAL DC DEPTH CORRECTION DST DRILL STEM TEST RMG REAMING ML MUD LOSSES FR FLOW RATE FC FLOW CHECK BR BIT RUN MMCFD Million Cubic Feet/Day U UNITS OF GAS FLUOR FLUORESCENCE		MUD DATA MW MUD WEIGHT sg(kg/l) MG MUD GRADIENT KPA/mt FV FLUID VISCOSITY sec PV PLASTIC VISCOSITY Cp YP YIELD POINT lb/cf2 Gel GEL STRENGTH lb/cf2 pH ACIDITY F FILTRATE cm3/30 Ck CAKE THICKNESS cm/32 S SALINITY kg/m3 SD SAND CONTENT % O OIL CONTENT % WL WATER LOSS cm3/30 Sol SOLIDS CONTENT % Cl CHLORIDES KCl POTASSIUM CHLORIDE mg/l Ca CALCIUM CONTENT	
CORED INTERVAL DST INTERVAL FLUORESCENCE NO SHOW WEAK SHOW FAIR SHOW GOOD SHOW					

CLAYSTONE	MEDIUM SST	LIMESTONE	GYPSUM	TUFF	FERRUGINOUS	CALCAREOUS	GLAUCONITE	MICROFOSSILS
SILTSTONE	FINE SANDSTONE	DOLOMITIC LIMES	HALITE	VOLCANIC ROCK	FORAMINIFERA	DOLOMITIC	MICACEOUS	FOSSILS
CONGLOMERATE	VF SANDSTONE	DOLOMITE	CEMENT	IGNEOUS ROCK	BRYOZOA	CARBONACEOUS	PYRITE	LITHICS
COARSE SST	BRECCIA	COAL	CALCARENITE	METAMORPHICS	FELDSPAR	CHERTY	BROKEN FOSSILS	SIDERITE





510

520

530

540

550

560

WOB 11-16 klbs
RPM 105-115
SPP 1415-1500 psi
FLOW 578-580 gpm

NO GAS

MARL:med dk gry,dk grnsh gry,occ med-lt gry,arg,occ shell frags,tr coral frags, tr xln LMST frags,sft frm,mod hd,dom sbbiky,sbfiss i/p

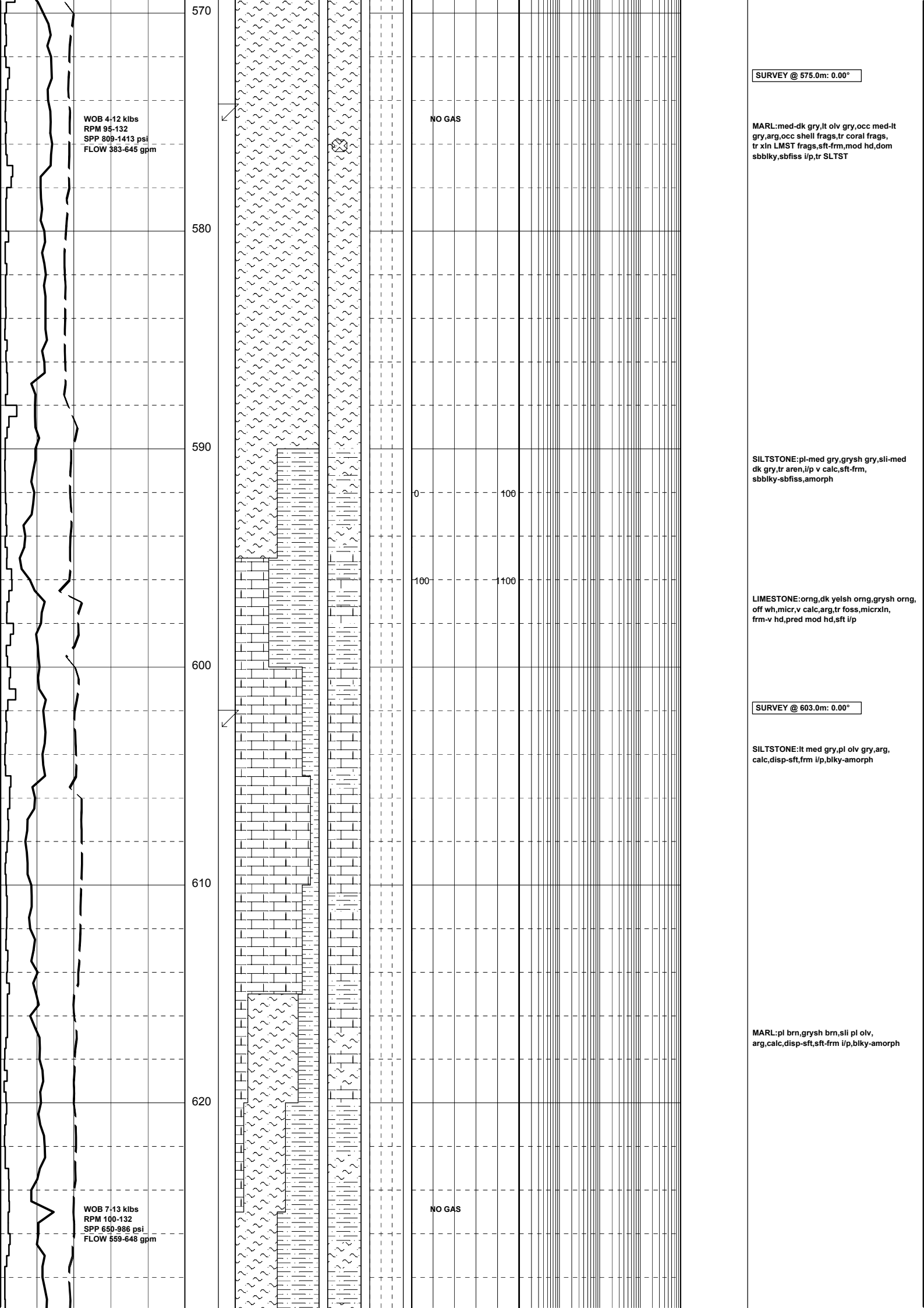
95/8" casing shoe set @ 544.5m

MARL:med dk gry,dk grnsh gry,occ med-lt gry,arg,occ shell frags,tr coral frags, tr xln LMST frags,sft frm,mod hd,dom sbbiky,sbfiss i/p

FIT @ 551m:
MWE:14.4 ppg

MARL:med-dk gry,lt olv gry,occ med-lt gry,arg,occ shell frags,tr coral frags, tr xln LMST frags,sft frm,mod hd,dom sbbiky,sbfiss i/p,tr SLTST

MW 1.06
FV 43
PV 10
YP 33
Gel 10/18/33
WL -
pH 8.5
CR -
Sol -3
Cl -2.2



SURVEY @ 575.0m: 0.00°

MARL: med-dk gry, lt olv gry, occ med-lt gry, arg, occ shell frags, tr coral frags, tr xln LMST frags, sft frm, mod hd, dom sbbkly, sbfiss i/p, tr SLTST

SILTSTONE: pl-med gry, grysh gry, sli-med dk gry, tr aren, i/p v calc, sft frm, sbbkly-sbfiss, amorph

LIMESTONE: orng, dk yelsh orng, grysh orng, off wh, micr, v calc, arg, tr foss, micr xln, frm-v hd, pred mod hd, sft i/p

SURVEY @ 603.0m: 0.00°

SILTSTONE: lt med gry, pl olv gry, arg, calc, disp-sft, frm i/p, bkly-amorph

MARL: pl brn, grysh brn, sli pl olv, arg, calc, disp-sft, sft frm i/p, bkly-amorph

WOB 4-12 klbs
RPM 95-132
SPP 809-1413 psi
FLOW 383-645 gpm

NO GAS

WOB 7-13 klbs
RPM 100-132
SPP 650-986 psi
FLOW 559-648 gpm

NO GAS

SURVEY @ 631.0m: 0.00°

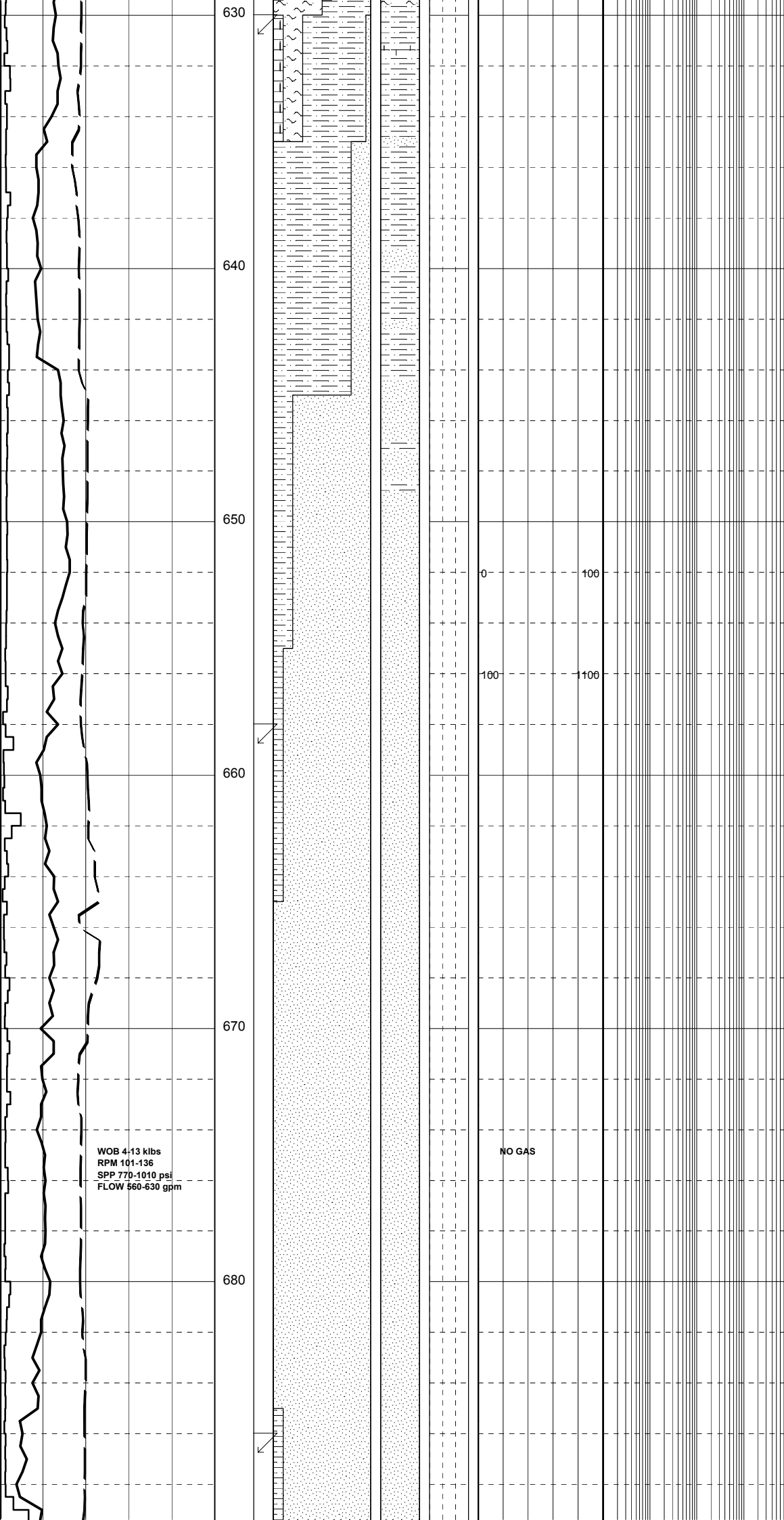
SANDSTONE:trnsi,lt brn,grysh brn,frstd,
rr mlky,i/p med-crs,com v crs,mnr f,mod
wl srt,pred lse Qtz grns.sbang-sbrnd,
fr-gd por,no fluor

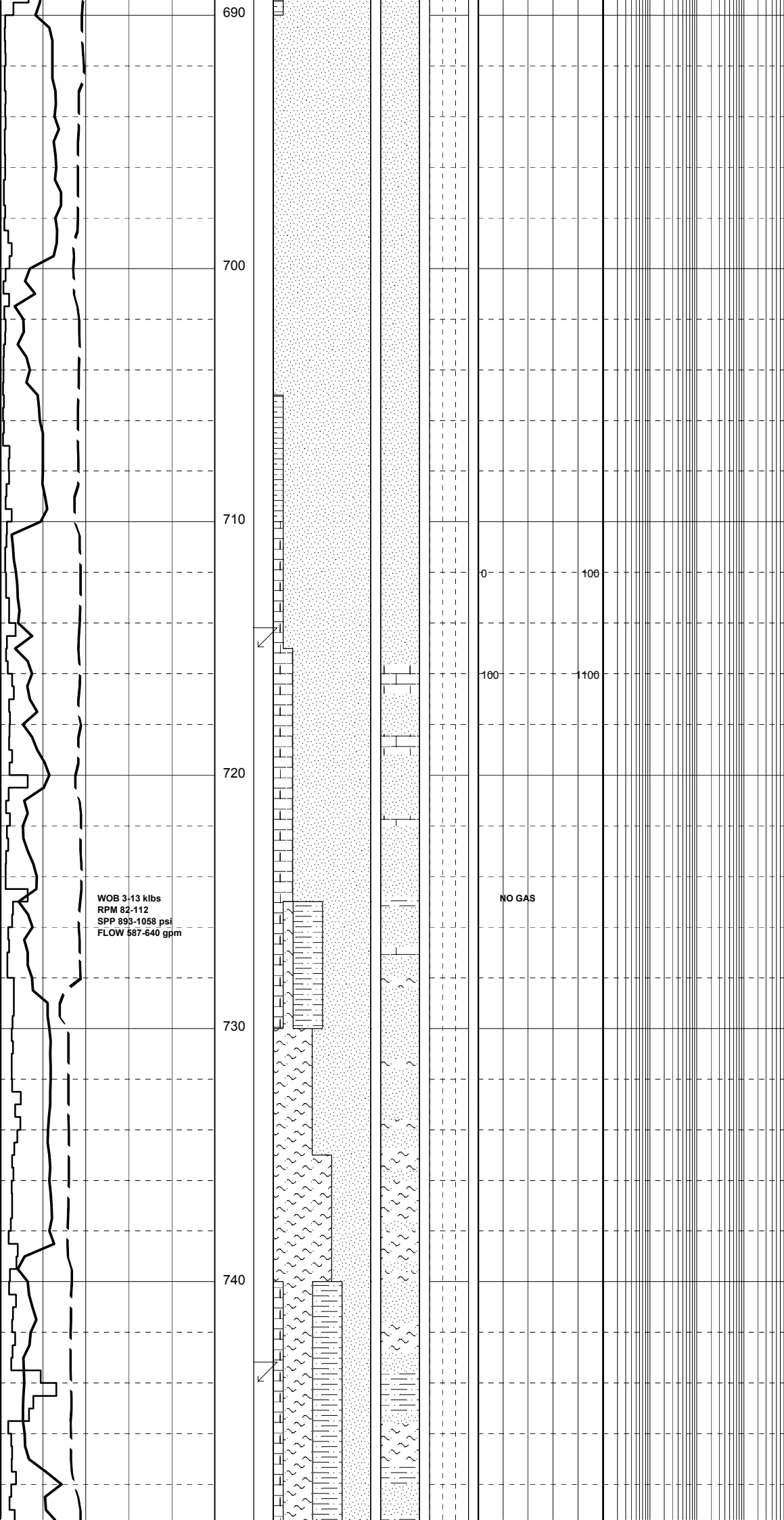
SURVEY @ 687.0m: 0.00°

SANDSTONE:trnsi,opq brn,sli frstd,
com crs-v crs,mnr med,sbrnd-sbang,
wk calc & sil cmt,mnr brn arg mtx,
lse & pred cin,v crs i/p,fr-gd por,
no fluor.

SANDSTONE:trnsi,opq pl brn,crs-v crs,
mnr med,sbrnd-sbang,wk calc & sil cmt,
mnr brn arg mtx,lse & pred cin,fr-loc
gd por, no fluor

SANDSTONE:trnsi-trnsp,clr,pl brn,occ
pl wh-off wh,med-crs grs,mnr f grs,
sbang-sbrnd,mod wl srt,sil mtx,lse &
pred cin,mod hd-v hd,fr-p inf por,
no fluor





SANDSTONE:trnsi-trnsp,sli frstd,lt gry-gry,occ pl wh-off wh,clr,med-crs grs,occ f grs,sbang-sbrnd,sil cmt,wk calc mtx,lse & pred cln,mod hd-v hd,fr-p inf por, no fluor

SURVEY @ 715.0m: 0.00°

LIMESTONE:mlky wh-dsky wh,lut,ool text,micrxln,sft-v sft,consol w arg mtrx

SANDSTONE:trnsi,clr,pl brn,occ pl wh-off wh,occ clr org xls of Qtz,pred med-crs grn,occ f grn,sil cmt,mod calc mtrx,Lse & pred cln,mod hd-v hd,fr-p inf por, no fluor.

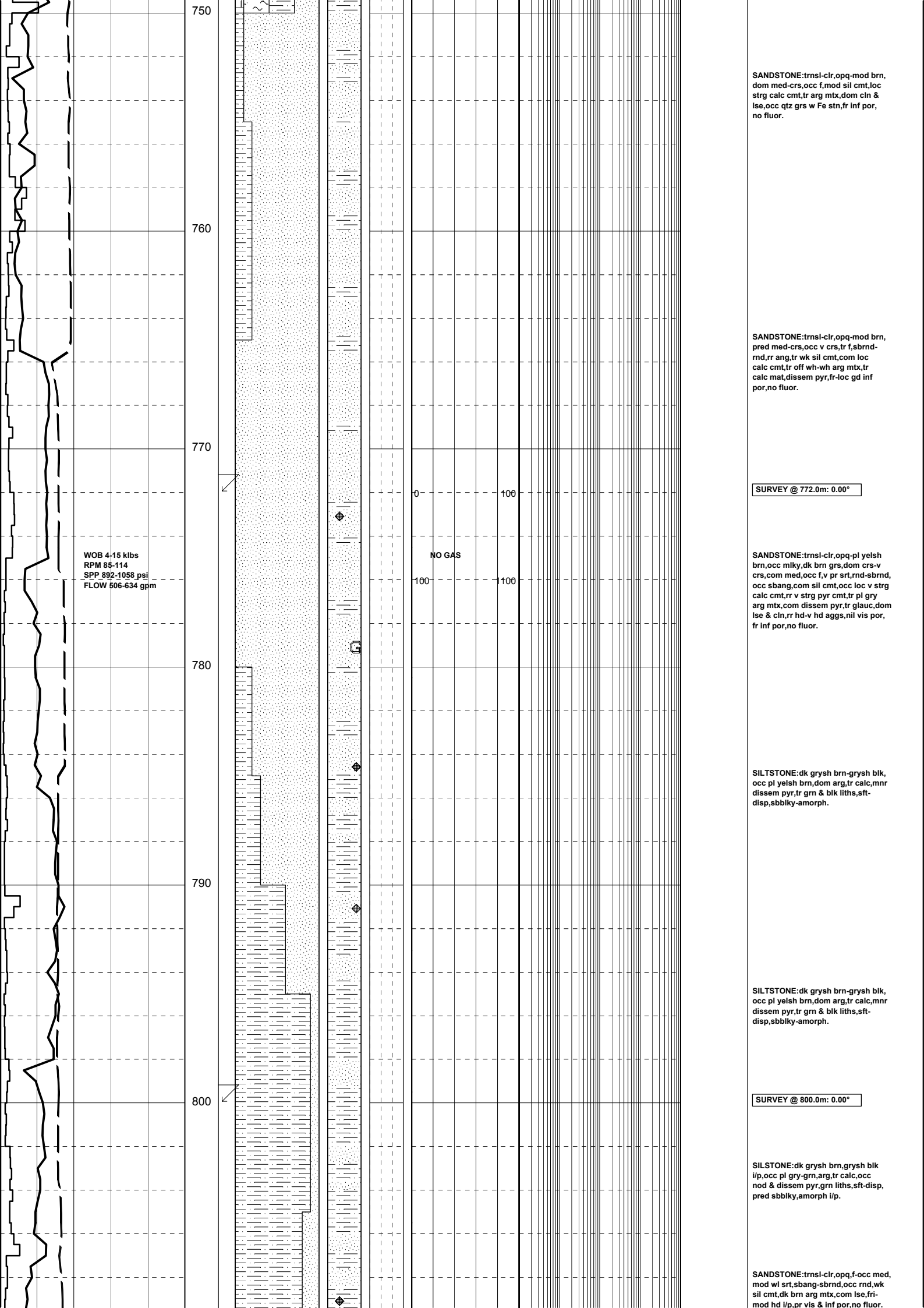
SANDSTONE:trnsi-clr,pl brn,occ wh-off wh,occ cln org xls of qtz,pred med-crs,occ f sil smt,mod calc cmt, tr arg mtx,gen lse & cln,mod hd-v hd,fr inf por,no fluor.

SURVEY @ 744.0m: 0.00°

WOB 3-13 klbs
RPM 82-112
SPP 893-1058 psi
FLOW 587-640 gpm

NO GAS

690
700
710
720
730
740



SANDSTONE:trnsi-clr,opq-mod brn, dom med-crs,occ v cmt,sil cmt,loc strg calc cmt,tr arg mtx,dom cln & lse,occ qtz grs w Fe stn,fr inf por, no fluor.

SANDSTONE:trnsi-clr,opq-mod brn, pred med-crs,occ v crs,tr f,sbrnd-rnd,rr ang,tr wk sil cmt,com loc calc cmt,tr off wh-wh arg mtx,tr calc mat,dissem pyr,fr-loc gd inf por,no fluor.

SURVEY @ 772.0m: 0.00°

SANDSTONE:trnsi-clr,opq-pl yelsh brn,occ mlky,dk brn grs,dom crs-v crs,com med,occ f,v pr srt,rnd-sbrnd, occ sbang,com sil cmt,occ loc v strg calc cmt,rr v strg pyr cmt,tr pl gry arg mtx,com dissem pyr,tr glauc,dom lse & cln,rr hd-v hd aggs,nil vis por, fr inf por,no fluor.

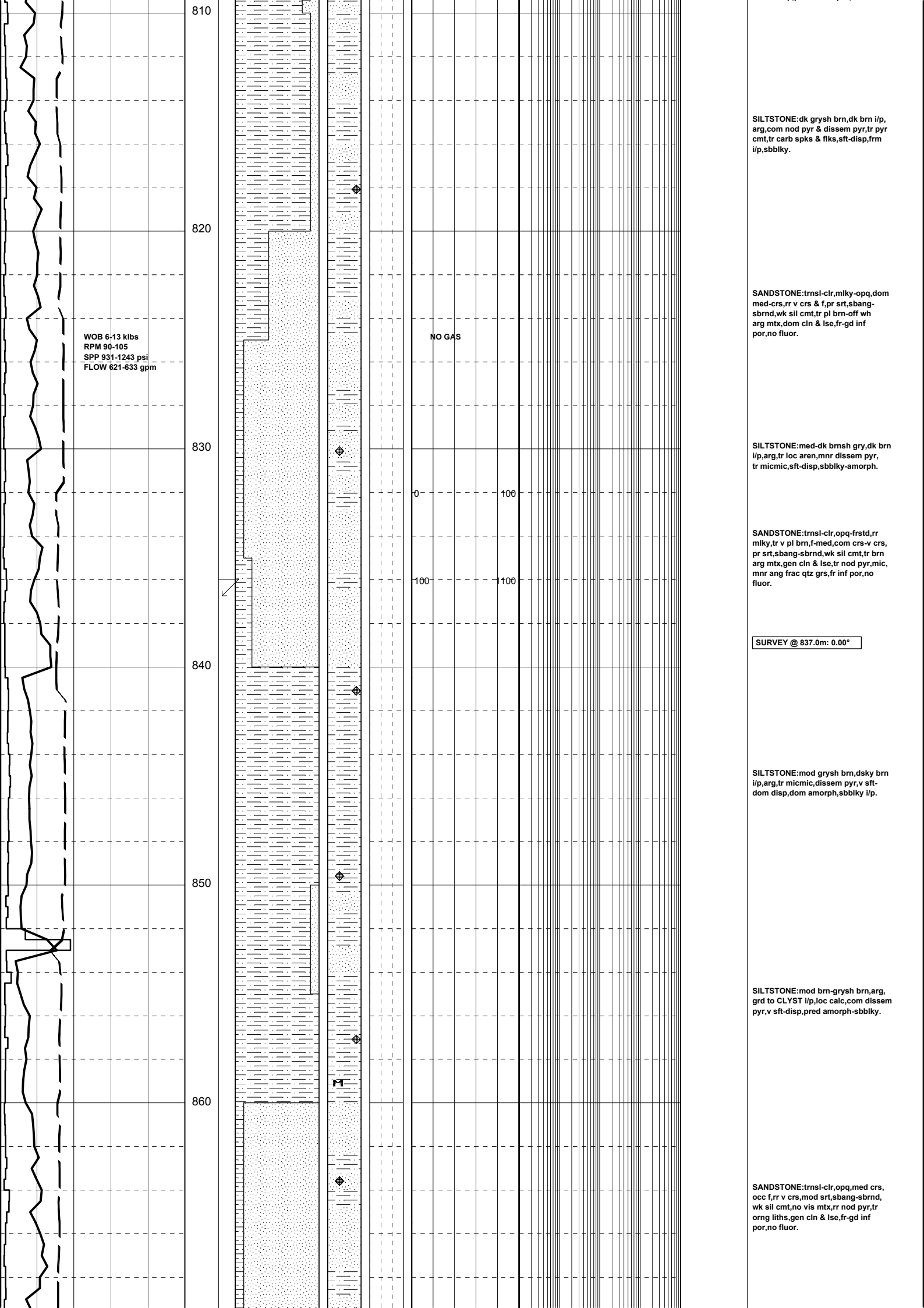
SILTSTONE:dk grysh brn-grysh blk, occ pl yelsh brn,dom arg,tr calc,mnr dissem pyr,tr grn & blk liths,sft-disp,sbbiky-amorph.

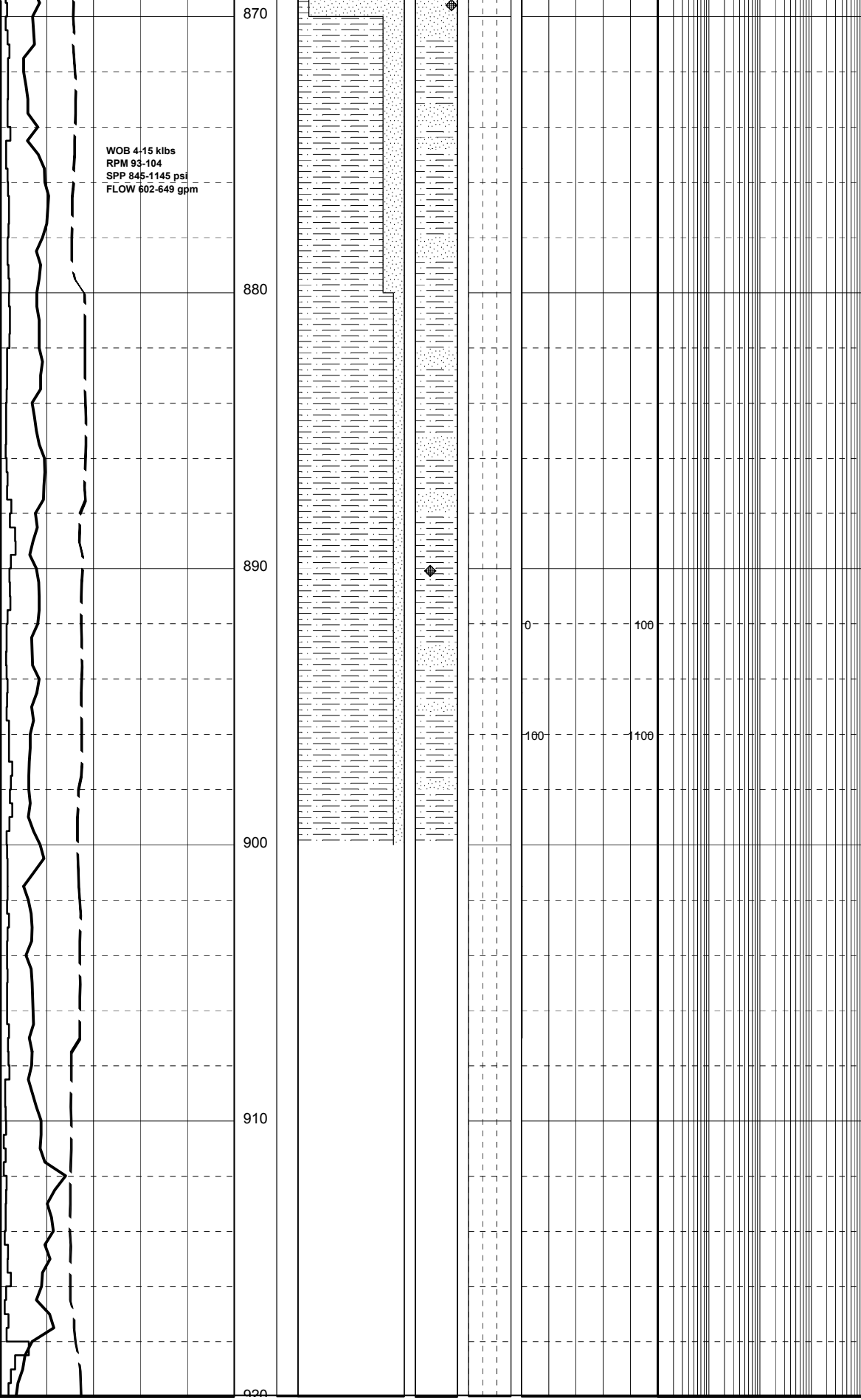
SILTSTONE:dk grysh brn-grysh blk, occ pl yelsh brn,dom arg,tr calc,mnr dissem pyr,tr grn & blk liths,sft-disp,sbbiky-amorph.

SURVEY @ 800.0m: 0.00°

SILTSTONE:dk grysh brn,grysh blk i/p,occ pl gry-grn,arg,tr calc,occ nod & dissem pyr,grn liths,sft-disp, pred sbbiky,amorph i/p.

SANDSTONE:trnsi-clr,opq,f-occ med, mod wl srt,sbang-sbrnd,occ rnd,wk sil cmt,dk brn arg mtx,com lse,frimod hd i/p,pr vis & inf por,no fluor.





SILTSTONE:mod brn,grysh brn,dsky
 brn i/p,arg,grd to CLYST,tr micmic,
 blk lith spks,disp,v sft i/p,dom
 amorph,sbbiky i/p.

SILTSTONE:mod brn,grysh brn,dsky
 brn i/p,occ pl yelsh brn,arg,grd to
 CLYST,tr micmic,blk lith spks,disp,
 v sft i/p,dom amorph,sbbiky i/p.

SANDSTONE:trnsi-clr,pl gry i/p,
 dom f-med,tr crs,mod srt,sbang-
 sbrnd,wk-mod loc calc cmt,tr sil
 cmt,no vis mtx,tr nod pyr,crm &
 blk liths,rr org liths,dom lse &
 cln,rr fri aggs,pr vis & inf por,
 no fluor.